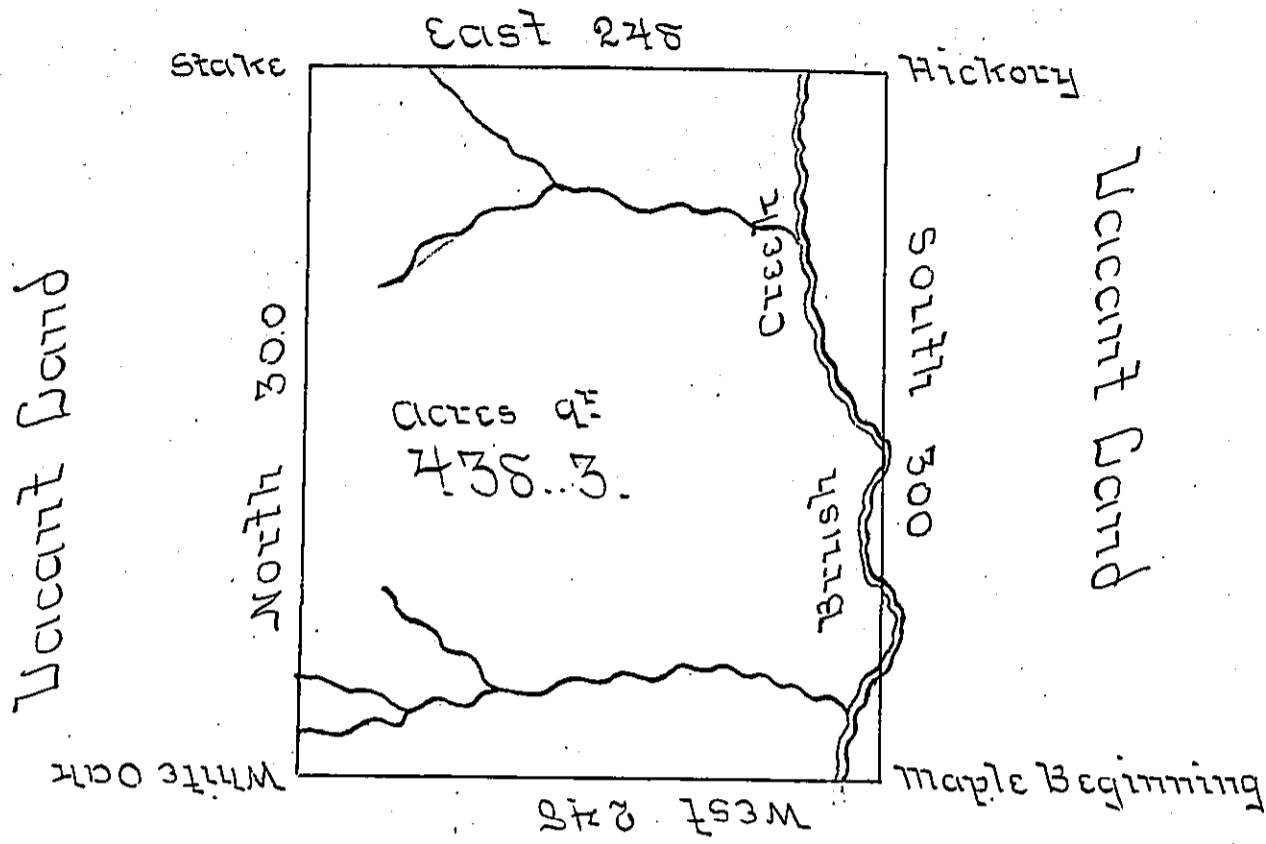


Warrant Land



Depreciation Lands

A Draught of a Tract of Land surveyed the 17th day of November 1793 in pursuance of a Warrant granted to Charles Morgan for 400 Acres dated the 29th day of March 1793. Situate North & West of the River Ohio in Jonathan Beets District on Brush Creek by Estimation two or three Miles from the Mouth where it empties into Conaquaennessing to include Woods Improvement Called Mill Seat containing four Hundred & thirty eight Acres three quarters together with the usual Allowance of 6th C^t.

Jonathan Beets. U.S.

To Daniel Brodhead Esq^r
Surveyor Gen^l

IN TESTIMONY that the above is a copy of the original remaining on file in the Department of Internal Affairs of Pennsylvania, made conformably to an Act of Assembly approved the 16th day of February, 1833, I have hereunto set my Hand and caused the Seal of said Department to be affixed at Harrisburg, this twenty five day of February 1906.

Luca R. P...
Secretary of Internal Affairs.